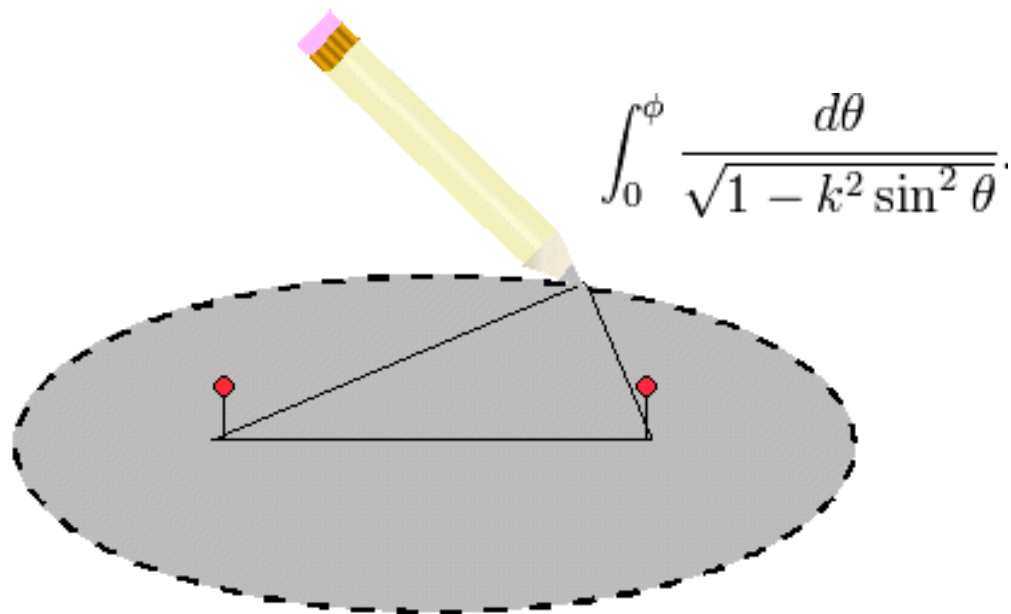


The SUMO Speaker Series for Undergraduates

(food from Pizza Chicago)
Wednesday, May 12
4:40-5:30, room 380C

The Circumference of an Ellipse

Prof. Akshay Venkatesh



Abstract: Play the following game, starting with two positive real numbers A and B: Replace them by their mean $((A+B)/2)$ and their geometric mean (square root of AB). Repeat many times. What happens? I will explain what this has to do with the circumference of an ellipse, computing Pi, and other good stuff.

sumo.stanford.edu/speakers